



# Netlogic Solutions

Connecting Logic with Technology

*Corporate Capabilities for 2026*

# Who We Are

For over 20 years, Netlogic Solutions has served as a trusted, Minority-Owned Small Business (SDB) delivering innovative IT solutions to federal and commercial leaders. We merge deep industry experience with a fresh perspective to solve complex challenges and drive results.

## Our Core Strengths

- **20+ Years of Proven Experience:** Deep expertise and a long history of delivering reliable, high-impact IT services.
- **Trusted by Federal & Commercial Clients:** A demonstrated ability to meet the rigorous demands of a diverse client portfolio.
- **Innovative & Efficient Solutions:** Specializing in forward-thinking technology that optimizes performance and value.
- **Certified & Diverse:** Proudly operating as a Minority-Owned and Small Disadvantaged Business (SDB).

# What We Do

We deliver comprehensive, future-focused IT services designed to solve today's challenges and unlock tomorrow's opportunities. Committed to exceeding every expectation, our expert team applies cutting-edge skills across a spectrum of critical domains to ensure your success.

## Our Core Services

- **Software & Systems Engineering:** Developing tailored software and engineered systems.
- **Data Management:** Turning raw data into actionable intelligence.
- **Digital Modernization:** Modernizing infrastructure with secure, scalable cloud solutions.
- **Artificial Intelligence:** Building intelligent systems to solve complex challenges.
- **Cybersecurity:** Implementing resilient cybersecurity to safeguard critical assets.
- **Mission Support:** Ensuring mission success through expert project management.

# Contracts and Appraisals



UNIQUE ENTITY IDENTIFIER  
(UEI) U6L7AZABE724  
COMMERCIAL AND  
GOVERNMENT ENTITY:  
(CAGE) 6JBF0



**8 STARS III**  
Contract Holder [47QTCB21D0322]



(MAS) Multiple Award Schedule  
Contract Holder  
[GS-35F-388DA]



**CIO-SP3**  
SMALL BUSINESS  
IT SERVICES/SOLUTIONS  
Contract Number: HHSN431620120079JW



**MDA SHIELD**  
[HQ085926DF384]



**eFAST**  
693DK9-22-A-00125






# *Solutions we bring to the table*

## 1 **Software & Systems Engineering**

At Netlogic, our expert engineers partner directly with you to translate complex requirements into robust, custom software. We deliver not just code, but powerful, secure, and scalable systems tailored to your specific environment, ensuring you have the exact tools you need for mission success.

## 2 **Data Management**

We unlock the strategic value hidden within your data. Our experts apply disciplined processes to transform raw information into a powerful asset, working directly with you to structure, analyze, and visualize it. This approach delivers the clear, actionable insights your team needs to make confident, data-driven decisions that fuel strategic growth.






# *Solutions we bring to the table*

## **3 Digital Modernization**

We help you move beyond the limitations of legacy infrastructure by engineering secure, scalable, and resilient digital environments. Our approach focuses on strategically migrating workloads to the cloud and optimizing your systems for peak performance and cost-efficiency. The result is an agile, secure foundation that protects your digital assets and prepares your organization for the future.

## **4 Artificial Intelligence**

Netlogic harnesses the power of Artificial Intelligence to transform your data into a proactive, intelligent force. By designing and integrating custom machine learning models, the Netlogic team automates complex processes and uncovers critical insights to solve challenges that traditional methods simply cannot touch. This approach empowers you to make faster, more accurate decisions across your entire operation.





# *Solutions we bring to the table*

## **5 Cybersecurity & Cloud Services**

We build scalable cloud environments with security at their core. Our approach is designed to accelerate innovation and reduce IT costs while implementing resilient cybersecurity strategies to safeguard your critical assets. By architecting solutions aligned with rigorous standards like NIST 800-53, we ensure your infrastructure is powerful, protected, and fully compliant.

## **6 Quality Assurance & Control**

Our approach is built on a simple premise: preventing issues is more effective than fixing them. We implement rigorous, process-driven testing and validation throughout every project lifecycle to ensure the highest standards of quality and reliability. This proactive focus reduces rework costs, ensures compliance, and delivers a superior and more reliable end product for enhanced user satisfaction.





# *Solutions we bring to the table*

## 7 **Mission Support**

Our services provide the structure, oversight, and expertise needed to guarantee the success of your most important programs. We provide end-to-end support by:

- **Executing Disciplined Project Management:** We manage the full project lifecycle—scope, schedule, and budget—with precision, using proven methodologies to ensure predictable, high-quality delivery.
- **Providing Strategic & Analytical Support:** Our team assists with crafting analytical solutions to evaluate the progress of your supporting projects, and ensure every initiative is perfectly aligned with your overarching goals.
- **Managing Risk & Communication:** We proactively identify and mitigate potential risks before they become problems while maintaining clear, consistent communication that keeps all parties informed and aligned.

# AI Integration

**Next-Generation AI Integration:** Artificial Intelligence goes beyond automation. It thinks, adapts, and solves problems the way your business demands. We have the expertise to make that a reality inside your organization, on your terms.

## Custom AI Solution Architecture

- **LLM Fine-Tuning, RAG & MCP:** Netlogic can transform your static internal data into a verifiable, real-time intelligence layer for your business.
- **Legacy-to-AI Integration:** Moving beyond "new apps" to surgically inject advanced AI capabilities into your legacy software environment.
- **AI Governance:** We design and implement a custom AI Governance to align with company policies.
- **Scalable Impact:** Our solutions increase **Decision Velocity** while maintaining strict **AI Governance** and **Human-in-the-Loop** oversight.

## Automated Business Intelligence

- **Predictive Analytics:** Transitioning from "what happened" to "what will happen" using historical data patterns.
- **Computer Vision & OCR:** Automating complex document processing and visual inspections.
- **Agentic Execution:** Autonomous Internal Agents (Multi-Agent Systems) that are intelligent, cooperative AI agents that handle multi-step workflows, research, operations, and internal support with minimal human intervention.



# Project Management

## Next-Generation Project Management: From Vision to Value

Traditional project management is no longer enough. We provide agile, strategic oversight to ensure your projects succeed and deliver measurable business impact.

### Our Approach

- **Strategic Discovery & Alignment:** We align project objectives with your core mission through deep business and technical needs assessments.
- **Intelligent Planning & Execution:** We build robust frameworks, from initial planning and PMO design to portfolio analysis that optimizes your resources.
- **Proactive Oversight & Risk Mitigation:** We keep projects on track with continuous health checks, predictive risk analysis, and transparent earned value reporting.



## Project Management

Effective planning, organization, and control for successful project delivery.



# Our Engine for Success

## Methodologies & Tools

### Our Methodologies

- **Agile (Scrum & Kanban):** Delivering value faster through iterative development and adaptation.
- **Hybrid Models:** Blending Waterfall structure with Agile flexibility for complex projects.
- **DevSecOps Integration:** Automating your delivery pipeline by uniting development and operations.

### Our Tools

- **Project Management:** Expertise in Jira, MS Project, and Microsoft 365, and Google Workspaces for seamless workflows.
- **BI & Data Visualization:** Mastery of Power BI, and our **LogicVU®** to create actionable insights.
- **Federal Data Intelligence:** Using **FedSpendVU** for a competitive edge in government contract analysis.
- And, more...



## Security

Securing the network and physical security along with user education is a must.

# Our Customers

## Public Sector

- Bureau of Alcohol, Tobacco, Firearms and Explosives (ATF)
- Environmental Protection Agency (EPA)
- General Services Administration (GSA)
- US Dept. of Agriculture (USDA)
- US Dept. of Labor (DOL)
- US Patent and Trademark Office (USPTO)
- US Dept. of War (DOW)



# Our Customers

## Private Sector

- Comcast
- Motorola
- TravelClick
- Rexam
- US Foods
- Allstate
- HSBC Bank
- JP Morgan Chase
- Harris Bank



**MOTOROLA**



# Netlogic Strategic Partnerships

**Appian**



 Microsoft  
 AI Cloud Partner



# Our Projects - DOL

## DOL OCFO Financial Services BPA from 2025 - 2030

We are proud to announce our partnership with **Verdi Consulting** on a \$57+ million award from the U.S. Department of Labor's Office of the Chief Financial Officer (OCFO). For the next five years, our team will provide comprehensive IT support services to the OCFO, the Department's principal financial management organization, directly supporting its mission to serve America's workforce and retirees.

This contract is a key component of the OCFO's strategic investment in modernizing its technology infrastructure, with a clear focus on automation and cybersecurity. Our work will directly advance these modernization goals, enhancing the critical financial systems that support the Department of Labor's vital programs.



# Our Projects - DOL

## Job Corps: Unified Management System (UMS) from 2020 - 2027

### The Challenge and The Solution

Netlogic is partnering with the Department of Labor's Office of Job Corps (OJC) and Office of Financial Administration (OFA) to deliver a Unified Management System (UMS) that will fundamentally modernize their budget planning, financial management, and reporting capabilities.

Our unified solution replaces the fragmented functionality of legacy systems, such as JFAS, with a cohesive, modern platform. The UMS is engineered to seamlessly ingest, standardize, and streamline financial data from critical DOL sources—including the NCFMS financial system, and the JCFMS contract spending tracker. By creating a standardized data layer, we provide a single source of truth that powers a suite of customized analytical and management tools.



# Our Projects - DOL

**Job Corps: Unified Management System (UMS) from 2020 - 2027**

The Technology – Our LogicVU™ Framework

Our solution is built on Netlogic's proprietary LogicVU™ framework, an accelerator that unifies the system with reusable components, data models, and integration patterns engineered for Azure, Power BI, and Appian.

This framework creates a seamless operational loop: Power BI delivers real-time insights, and LogicVU™ orchestrates an immediate handoff to Appian's workflow engine for action. A robust 'write-back' capability ensures actions in Appian reliably update source systems, guaranteeing dashboard data is always current. LogicVU™ transforms these powerful technologies into a cohesive, scalable enterprise solution.



# Our Projects - DOL

## Job Corps: Unified Management System (UMS) from 2020 - 2027

### The Execution – Comprehensive Project Delivery

Netlogic provides end-to-end oversight for the UMS project, ensuring every aspect of delivery is executed to the DOL's exacting standards. Our project management methodology includes consistent tracking of all activities and schedules, rigorous gathering of business requirements, and the development of clear project implementation timelines.

Our team manages the complete lifecycle, from software configuration and interface development to defining and executing User Acceptance Testing (UAT) and providing regular, transparent status reports. We ensure all system outputs are fully accessible via mobile interfaces for on-the-go insight. Furthermore, we deliver comprehensive written documentation for application development and management, and we perform detailed impact and risk assessments to ensure a smooth transition from the current architecture to the future-state UMS platform.



# *Our Projects - DOL*

## **Employment and Training Administration (ETA), CM/QA/IV&V Services**

Netlogic testing services include static and dynamic functional and regression testing & verification; static and dynamic application security testing; Section 508 compliance testing (in compliance with DHS Trusted Tester processes and tools); performance and load testing; web portal testing, defects (bugs) reporting techniques; monitoring updates to baseline configurations; and configuration status of the enterprise IT environment.



# Our Projects - DOL

## Employment and Training Administration (ETA), CM/QA/IV&V Services

Netlogic performed IT Asset Inventory Management including documenting, and maintaining system inventories including the manufacturer, model number, serial number, software license number, system/component owner.

This project used automated tools including OPManger, NetFlow Traffic Analyzer, Security Manager Plus, Asset Explorer CA, Inc., Software Change Manager, CMDB, Service Desk, Service Catalog, Hewlett-Packard (HP) Application Lifecycle Management Suite, Quality Center, LoadRunner, and QuickTest Professional/Unified Functional Testing.



# *Our Projects - USDA*

## **Food & Nutrition Service (FNS), Project Management Services and Support (PMSS)**

Netlogic provided Project Management (PM) support to the WIC Program Integrity and Monitoring Branch (PIMB) on a variety of OIT projects, and ensured that tasks were conducted in cooperation with PIMB and in compliance with applicable FNS and USDA Departmental mandates, policies, and guidelines.

Our staff conducted business need gathering and analysis, generated functional requirements, and drafted the PWS for new contracts offered by our client for bid. We monitored and tracked OIT projects in O&M and active development phases, and ensured the deliverables were quality checked and content verified.



# *Our Projects - USDA*

## **Food & Nutrition Service (FNS), Project Management Services and Support (PMSS) - Continued**

Netlogic assisted in managing other development contract teams for various projects during all phases of system development, from writing the PWS/SOW through final system closeout.

We provided a variety of services, including reviewing deliverable documents; gathering, developing, and documenting requirements; testing software for QA and UAT phases; verifying and validating Jira tickets; conducting technical evaluations of tools and solutions; keeping track of deliverables, milestones, and deadlines; and drafting document content for deliverables required of the client.

Netlogic supported six different OIT projects concurrently.



# *Our Projects - USDA*

## **Food & Nutrition Service (FNS), Professional Standards Training Tracker Tool System (PSTTT) Development, Operations, and Maintenance**

Netlogic developed, enhanced, and maintained the Professional Standards Training Tracker Tool (PSTTT) 2.0 using Agile development methodology.

PSTTT assists school nutrition professionals and State agencies with recording, tracking and managing the required training hours in four key areas to meet the requirements of the Healthy, Hunger- Free Kids Act of 2010 (HHFKA) Professional Standards Rule. PSTTT is an intuitive easy-to-use web-based application used by an audience that varies widely in technical resources and knowledge.



# *Our Projects - USDA*

## **Food & Nutrition Service (FNS), Professional Standards Training Tracker Tool System (PSTTT) Development, Operations, and Maintenance**

Netlogic redesigned the existing application and updated the components increasing system scalability.

PSTTT was developed using .NET and Microsoft SQL Server database. The application development and quality control environments were implemented in the Amazon Web Services (AWS) IaaS environment. Jira was used as the Agile development automated tool. We followed best practices with requirements gathering, and configuration management. Netlogic complied with CMMI Maturity Level 3 processes in the implementation of this program.



# *Our Projects - DOJ ATF IISD*

## **Department of Justice, Bureau of Alcohol, Tobacco, Firearms & Explosives, Intelligence and Information Systems Division, Data Cleansing Project**

Netlogic supported the National Field Office Case Information System (NFOCIS), a case management system used to document, track, and collect investigative information in support of ATF's law enforcement mission, strategic goals, program initiatives, and field activities.

The team developed a reproducible/repeatable methodology for data quality analysis and enhancement using the Qbase Data Transformer Tool. Data quality analysis uses a series of templates to quickly determine ways the data may be deficient in accuracy, completeness, or semantic correctness. Data quality enhancement analyzes available outside data sources, including the quality of those sources, and determines the best way that data can be used to correct invalid or missing data elements in the target system.



# *Our Projects - DOJ ATF IISD*

## **Department of Justice, Bureau of Alcohol, Tobacco, Firearms & Explosives, Intelligence and Information Systems Division, Data Cleansing Project**

Netlogic cleaned the data of Social Security Numbers, Names, and Address in both N-Force and N-Spect databases using the Qbase data tools.

These processes were self-monitoring and self-logging to ensure that the overall data quality process can be held to the highest levels of traceability.

Our team developed/supported the system using tools including, but not limited to, the Qbase (COTS) data transformer, XML, HTML, and Oracle.



# *Our Projects - EPA*

## **Office of Administration Services (OAS) Information System (OASIS)**

Netlogic provided software systems enhancement and sustainment services for applications for more than forty (40) software systems accessible via the OASIS web portal supporting all EPA personnel.

The OASIS computing infrastructure consists of Microsoft Windows servers, Oracle and SQL Server databases, as well as ColdFusion, Adobe Flex, Java and PHP technologies.



# *Our Projects - EPA*

## **Office of Administration Services (OAS) Information System (OASIS)**

Netlogic assisted with the design, development and deployment of a comprehensive web portal environment for all of OASIS software modules using a Content Management System (CMS) using Drupal. We supported Help Desk Services providing direct support to system users.

In support of improving customer care, we recognized the need to automate. We suggested an approved password reset functionality for the OASIS environment. After approval and implementation, monthly calls reduced from approximately 800 to less than 200.



# Our Projects - DOL

## Employment and Training Administration (ETA) Senior Community Service Employment Program (SCSEP) Performance and Results QPR System (SPARQ)

Netlogic supported the SPARQ application, a Case Management System that provided the Department of Labor (DOL) ETA with an automated system for managing grantee participant data.

The SPARQ platform offered a consistent and timely method for SCSEP's grantees to electronically enter participant information, including PII capture, entry evaluations, training provided, and exit evaluation metrics.

A key feature of the system was its automation of the Quarterly Progress Report (QPR) process, which handled the generation, display, and official approval of QPRs for grantees each quarter, as well as a summarized annual report. SPARQ also provided the ability to record participant training data and hours, and included several reporting functions that were used by DOL/ETA, grantees, sub-grantees, and designated analysts.

SPARQ<sup>+</sup>



# *Our Projects - USPTO*

## **Database Implementation and Enhancements (PALM and IFW)**

PALM database is one of the critical databases at USPTO. Many of the applications hosted at PTO interact with the PALM database including the Private and Public PAIR, IFW. The PALM database was running on unsupported Oracle software version 9.2.0.8 on a single node. The database goes through manual shutdown every single day to make a cold copy of the database to another server where the reports are run. The database itself was running into several performance problems besides the server issues.

Netlogic designed and configured a 2-node RAC for the primary PALM database and a secondary 2-node RAC for reporting database, WEBTA, and portal databases using Oracle 11gR2.



# *Our Projects - USPTO*

## **Database Implementation and Enhancements (PALM and IFW)**

To minimize the downtime for migration, Netlogic used GoldenGate to replicate the data from the 9i database (running on HP-UX) to 11g RAC database (running on RHEL 5.6) so the data was kept in sync between 11g RAC database and the 9i database. This replication configuration was removed once the migration was complete.

Netlogic implemented Oracle GoldenGate replication between the primary PALM database and PALM reporting database, as well as between the PALM database and public-facing PATXPUB (Public PAIR) database.



# *Our Projects - USPTO*

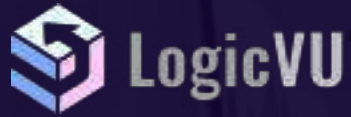
## **Database Implementation and Enhancements (PALM and IFW)**

IFW is the largest Oracle database at USPTO (80 TB in size), and it was running on 10gR2 on AIX. As part of the IT standardization on RHEL platform the database had to be migrated from AIX to Linux and, at the same time, upgraded from Oracle 10gR2 to 11gR2.

Netlogic set up and configured Oracle 12c cloud control and also configured compliance so that all the databases are set up to meet Federal CIS security requirements



# Our Product

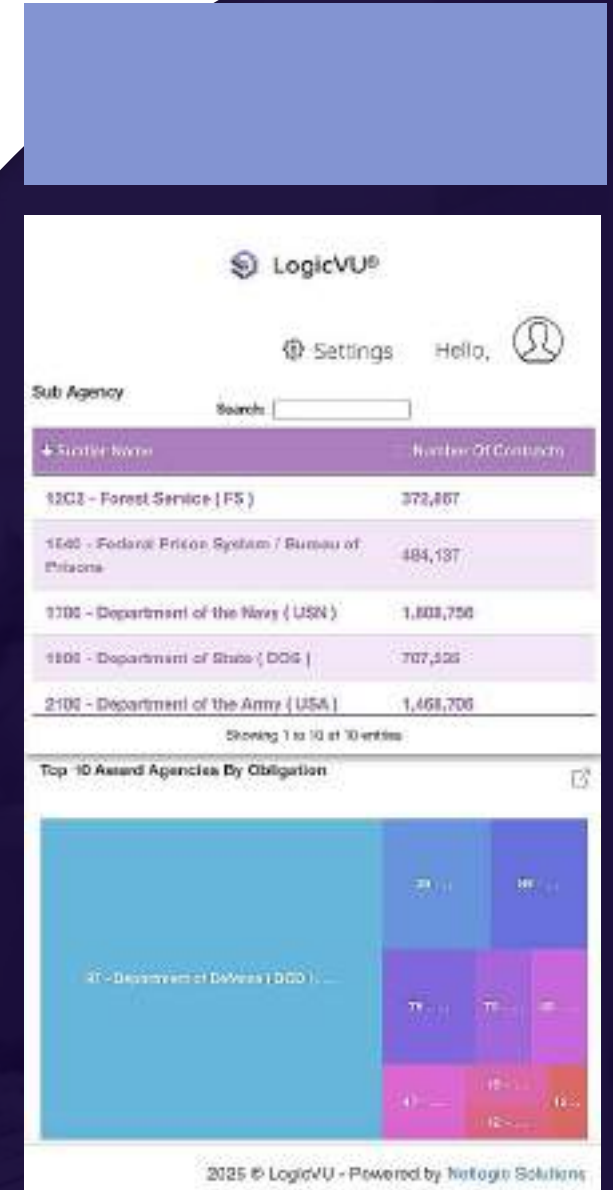


## LogicVU®: The Framework Suite

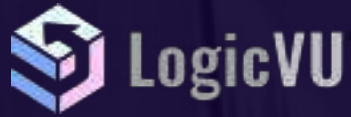
A unified "Command Center" that transforms fragmented data and apps into a streamlined operational powerhouse.

### Suite Highlights

- **LogicVU BI Engine:** The analytical heart that reveals the "why" behind your data through real-time, AI sophisticated logic.
- **LogicVU Compass:** A central directory that puts every tool just clicks away.
- **LogicVU Bridge:** Integrates third-party and legacy software into one seamless, native environment.
- **LogicVU Forge:** A dedicated development lab for building custom modules and workflows that evolve with your business.
- **Business Maturity:** A chemical-like catalyst that accelerates operational growth by unifying disparate tools into one framework.



# Our Product

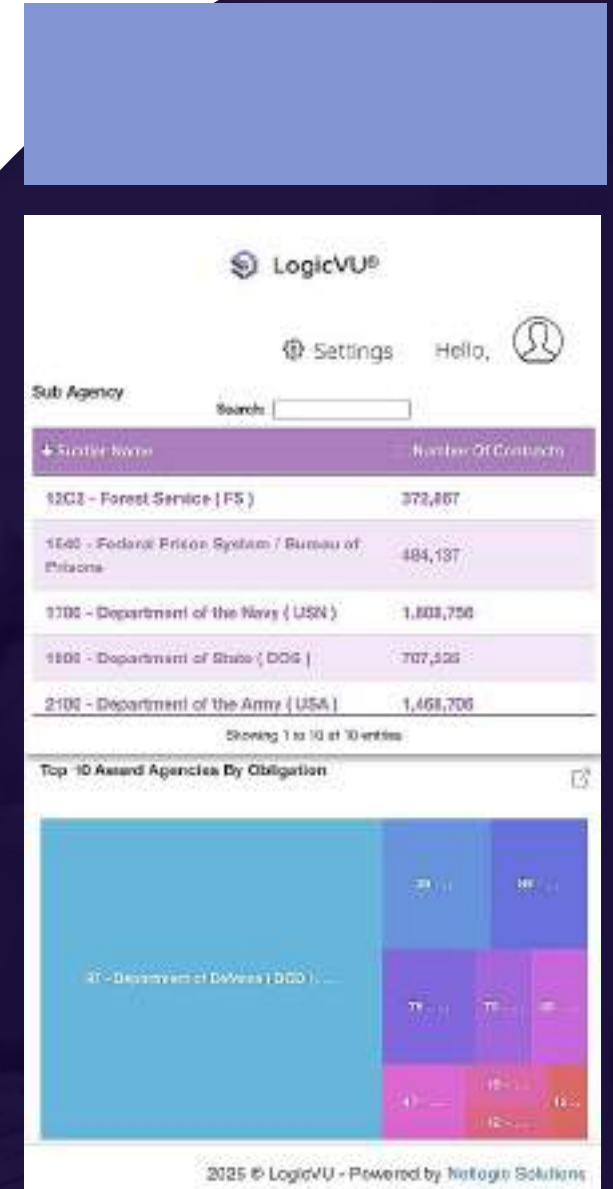


## LogicVU®: BI Core Technology

LogicVU's BI modern architecture delivers powerful, adaptable performance in any data environment, whether cloud or on-premise.

### Platform Highlights

- **100% Web-Based:** Universal access on any device with zero software installation.
- **Advanced Data Visualization:** Transforms complex data into clear, interactive visual insights.
- **Massive Data Processing:** Engineered to handle huge datasets with no loss in performance.
- **AI & Deep Learning:** Integrated AI to uncover deeper insights and automate complex analytics.
- **Flexible Deployment:** A portable solution for either cloud or on-premise installation to fit your infrastructure needs.



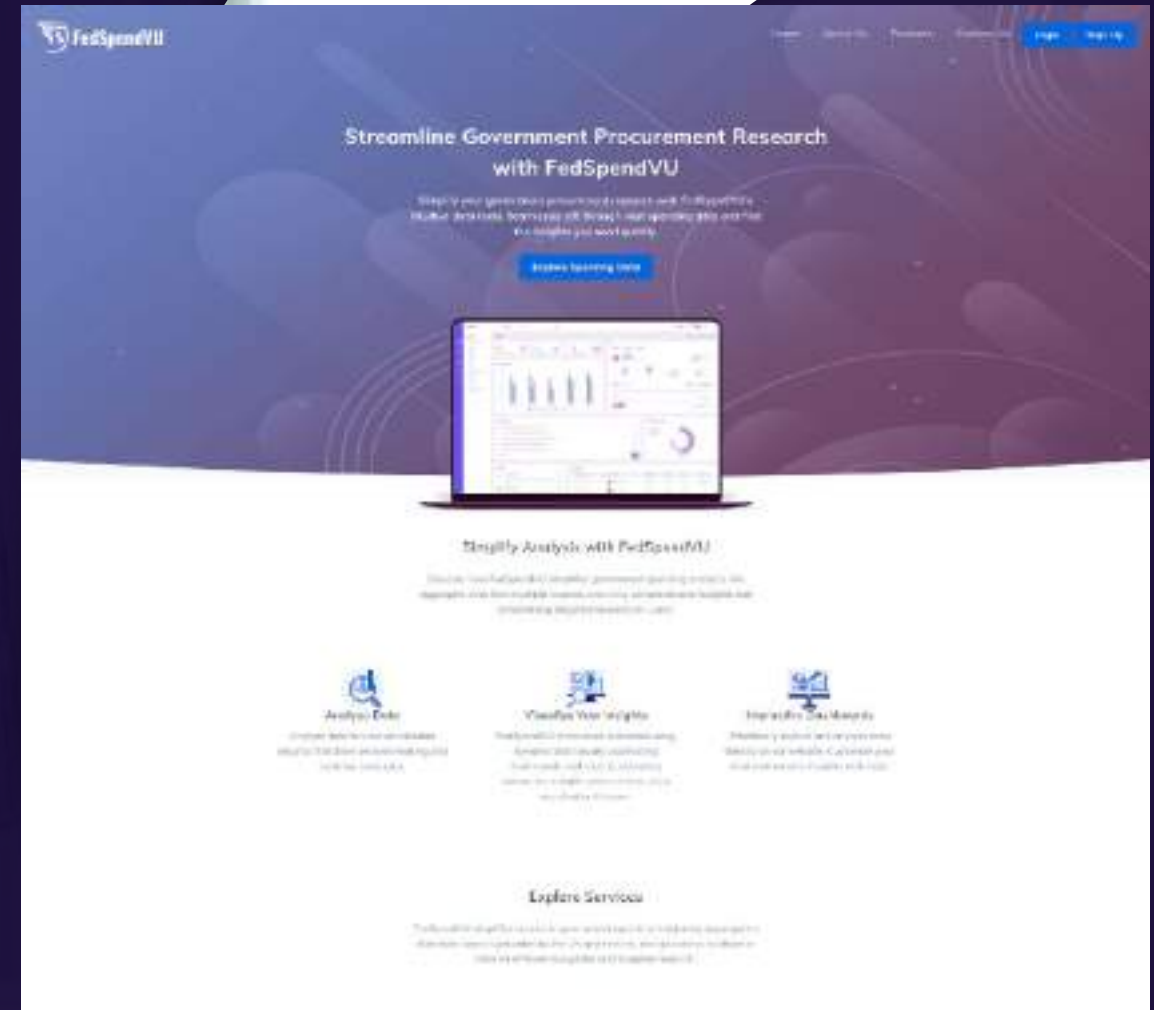
# FedSpendVU

**FedSpendVU:** A Government Procurement Data Tool Powered by LogicVU®

Built on the powerful LogicVU® architecture and BI, [FedSpendVU.com](https://www.fedspendvu.com) is our affordable and robust SaaS data intelligence platform, designed to provide clear insights into federal spending.

## Platform Capabilities

- **Integrated AI & Deep Learning:** Delivering interactive analytics dashboards, RAG-powered chatbots, and foundational knowledge bases for real-time intelligence.
- **Explore Spending Data:** Visually track the flow of funds from government agencies directly to contract vendors.
- **Simplify Reporting:** Instantly filter complex spending data by fiscal year, NAICS code, and Set-Aside status to generate precise reports.



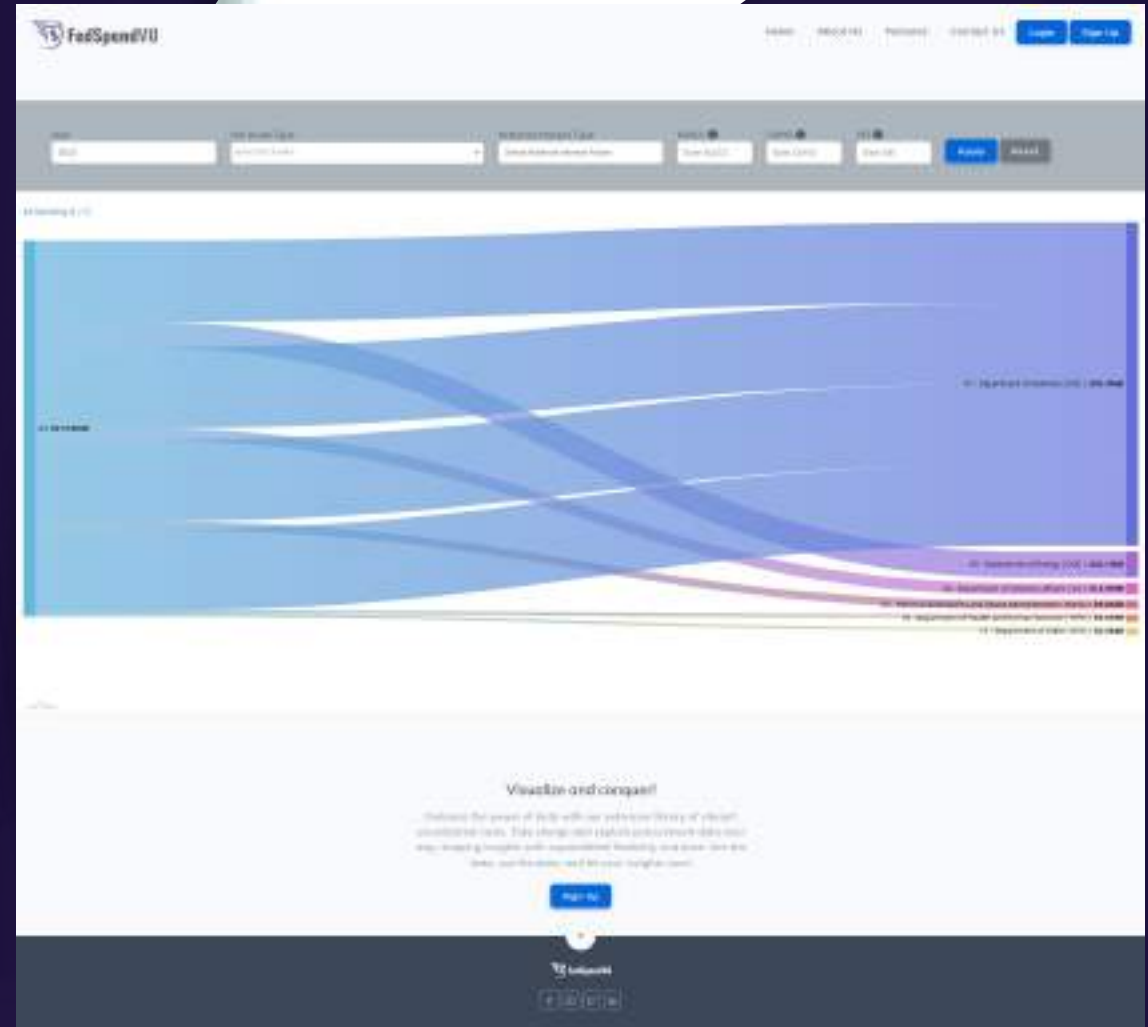
# FedSpendVU

## FedSpendVU: From Complex Data to Competitive Edge

FedSpendVU turns complex public data from sources like [SAM.gov](https://www.sam.gov) and USASpending into an actionable advantage. Our platform aggregates and visualizes information, making it intuitive to explore.

### Core Advantages

- **Intuitive Interface:** A self-explanatory, visualization-based interface allows users to easily filter and refine data to their exact needs.
- **Opportunity Discovery:** Explore aggregated data to serendipitously uncover new leads and strategic opportunities.
- **Centralized Data:** With all relevant information in one easy-to-access place, your team can focus on analysis and insight, not data hunting.



# Leadership



**Raj Gantaram**  
President & CEO

Raj Gantaram is a successful entrepreneur, visionary at Netlogic Solutions and an accomplished process, project, and program management professional with more than 20 years of IT and business management experience.

Mr. Gantaram, the President, CEO and Founder of Netlogic, has demonstrated a track record of successfully leading business and technical initiatives at both commercial and federal agencies from strategy inception through full life-cycle development and business case realization.

His assignments have included facilitating leadership at the executive level and working with line management to enable transformational improvement initiatives resulting in measurable and sustainable business gains.

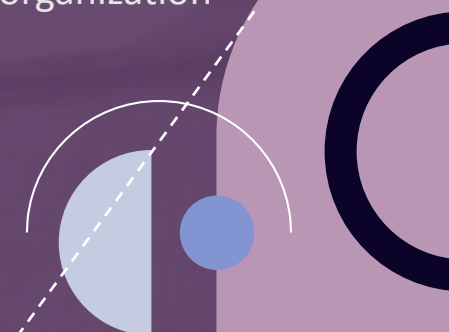
Mr. Gantaram has obtained a M.S. degree in Engineering at Texas Tech University, and can be reached at 703.261.3774 and [rgantaram@netlogicsolutions.com](mailto:rgantaram@netlogicsolutions.com).

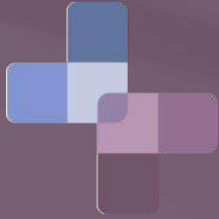


# Empowering Talent

We are proud to be a Minority-Owned Small Business and are committed to providing opportunities for diverse talent in the IT industry. We believe that diversity and inclusion are essential to our success, and we strive to create an inclusive workplace culture where everyone can thrive.

Netlogic Solutions Inc. is dedicated to delivering innovative, efficient, and effective IT solutions to our clients. Contact us today to learn more about how we can help your organization achieve its goals.





**NetlogicSolutions**

Connecting Logic with Technology

*Thank you.*

Email: [info@netlogicsolutions.com](mailto:info@netlogicsolutions.com)

Phone: +1 571.599.2142

Web: [www.netlogicsolutions.com](http://www.netlogicsolutions.com)

Principal Office

4229 Lafayette Center Drive

Suite #1175

Chantilly, VA, 20151

